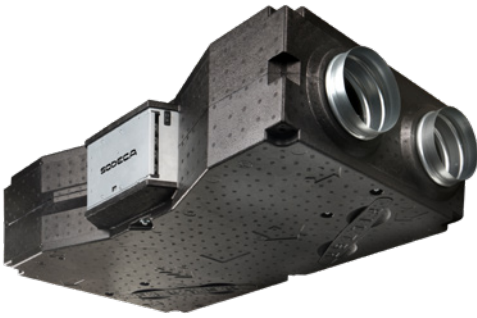


VENUS

High efficiency single zone heat recovery ventilators for residential installations



EC version control



High performance heat recovery ventilators to be installed inside residential buildings. With a low power consumption and heat recovery efficiency of up to 93%. For technical ceiling installation.

Finishing:

- Light expanded polypropylene body for low noise emission levels.
- Low profile models for false ceiling installation.
- 160 mm inlets/outlets (models 150 and 300) and 250 mm inlets/outlets (models 500 and 700).

Features of all versions:

- Counterflow heat exchanger.

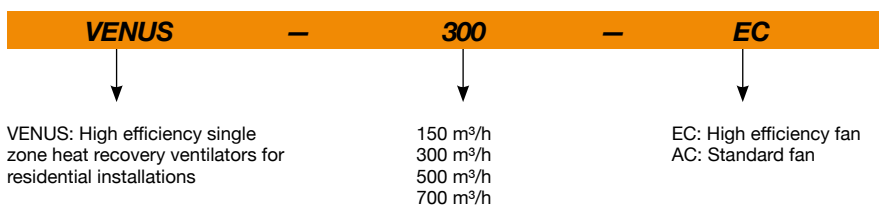
- Flow adjustment capacity according to external control signal.
- Condensate drain with built-in siphon.
- Access to filters and condensate drainage from above and below.

Additional features of the EC version:

- Operation compatible 50/60 Hz.
- Air supply filters with F7 efficiency level.
- High efficiency EC fans.
- Digital remote control panel included.
- Antifreeze protection and free cooling.
- Multizone control through the possibility of connecting CO₂, PIR (presence) and HR (relative humidity) sensors. ALL / NOTHING type signal.

Version	AC	EC
Motor Type	AC	EC (high efficiency)
Control panel	Manual selector CP-SM-V-4 (accessory not included)	Digital (included)
Control panel cable	4-wire, 230V (not included)	4-wire PTPM-RJ12 10 m Included/ Maximum 30 m
No. of fan speeds	3	3
Supply/Extraction filter efficiency	F5 / G4	F7 / G4
Alarm management	YES	YES
Flow control via external control	YES	YES
Each fan adjusted precisely	-	YES
Control of closing hatches	-	YES (hatches not supplied)
Connections to 5 optional sensors	-	Types: CO ₂ / PIR / HR
Sensor power supply	-	15V DC
External control to force maximum flow	-	YES
Free cooling by stopping 1 fan	-	YES (with timer setting)
Antifreeze protection	-	YES
Adjustable filter change alarm	-	YES
LED filter state control	YES	YES

Order code



Technical characteristics

Model	Maximum flow rate (m ³ /h)	Total power (W)	Recovery efficiency (%)	Maximum admissible current (A) 220-240V	Irradiated sound level at 3 m dB (A)	Approx. weight (Kg)	According ErP
VENUS-150-AC	185	105	93	2 x 0.23	37.3	17.4	2018
VENUS-150-EC	175	65	93	2 x 0.14	37.7	17.2	2018
VENUS-300-AC	265	145	93	2 x 0.32	38.9	19.5	2018
VENUS-300-EC	315	170	93	2 x 0.37	43.5	19.3	2018
VENUS-500-AC	515	230	93	2 x 0.50	47.1	35	2018
VENUS-500-EC	535	220	93	2 x 0.48	45.8	35.5	2018
VENUS-700-AC	650	270	93	2 x 0.59	42.9	40	2018
VENUS-700-EC	785	430	93	2 x 0.93	53.6	40.7	2018



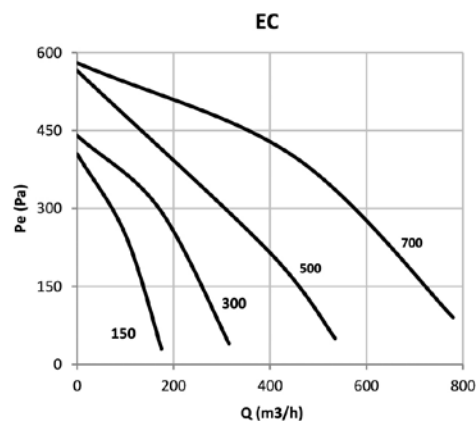
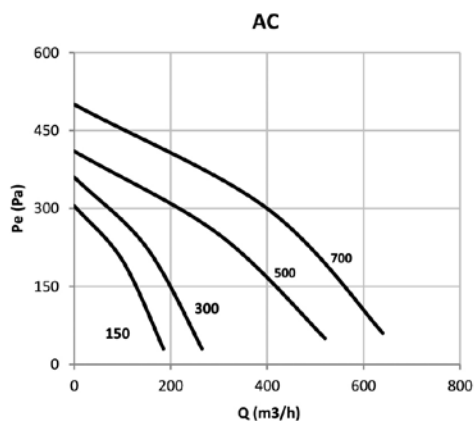
Erp. (Energy Related Products)

Information on Directive 2009/125/EC can be downloaded from the SODECA website or the QuickFan selector programme.

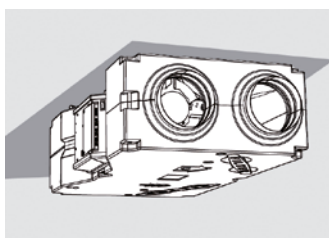
Characteristic curves

Q= Flow rate in m³/h, m³/s and cfm

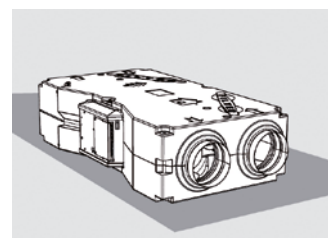
Pe= Static pressure in mm H₂O, Pa and inwg



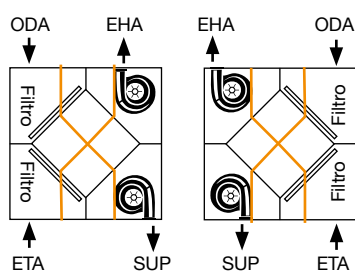
Installation



In false ceilings



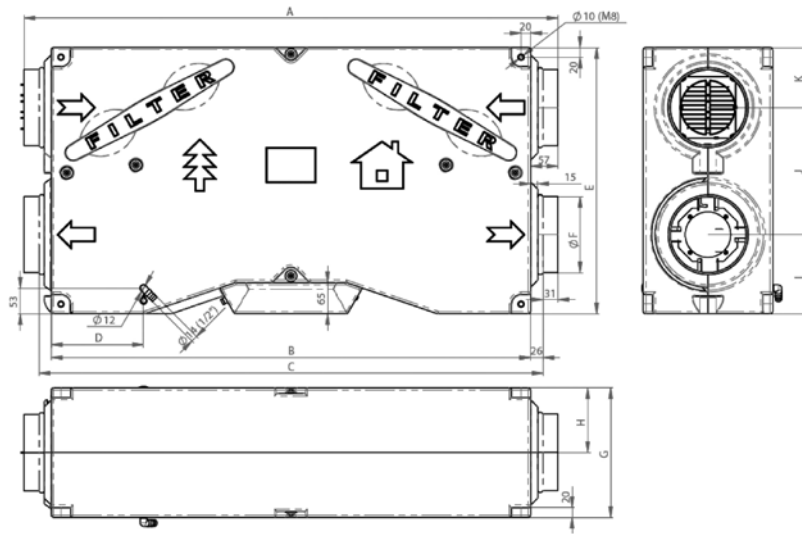
Floor-mounted



Configuration may be chosen by turning the machine through 180°.
Access to filters and drainage from above and below.

ODA: Fresh outdoor air / SUP: Air impulsion to the premise / EHA: Exit of exhaust air / ETA: Air extraction from premises

Dimensions mm



	A	B	C	D	E	ØF	G	H	I	J	K
VENUS 150 / 300	1114	1000	1051	193	555	159	270	135	165	265	125
VENUS 500 / 700	1505	1391	1441	248	846	249	360	180	235	420	190

Accessories



CP-SM-V-4



RH SENSOR



PIR SENSOR



CO2 sensor



Compuerta de cierre



SERVO DE COMPUERTA



FILTROS



CABLE PTPM-RJ12